

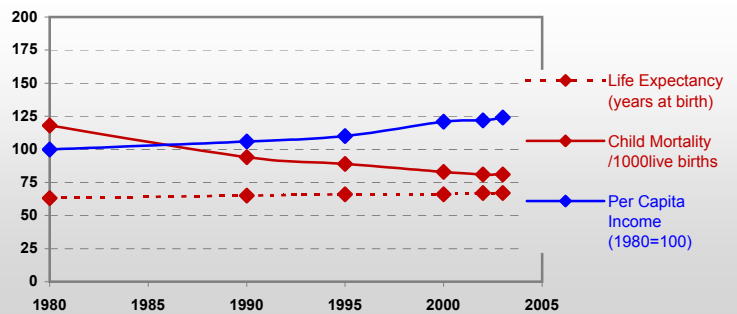
# Food and Agriculture Statistics Global Outlook

## World

Prepared by the **Statistics Division** (as of June 2006)

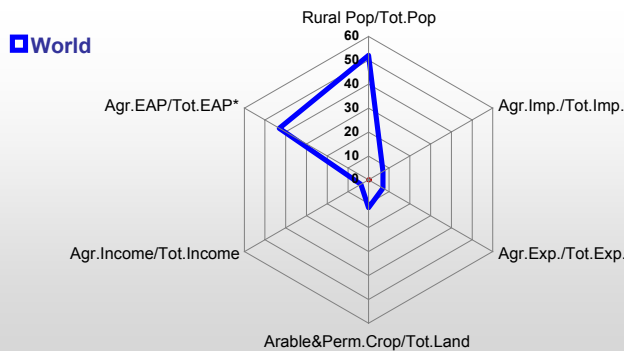
### General / Welfare

Population <sup>05 *</sup>	6,464,750
Per Capita GDP <sup>04 **</sup>	5,505
Agr. GDP / Agr. Population <sup>04**</sup>	472
Total Exports <sup>04 ****</sup>	8,973,891
Agric. External Assistance <sup>01-03 ***</sup>	29,932,852
Food Consumption Inequality (G) <sup>ly</sup>	0.1
Income Inequality (G) <sup>ly</sup>	0.6
Land Inequality (G)	n.a.
Undernourished Pop.(world)% <sup>01-03</sup>	14



\* 1000 \*\* \$ \*\*\* 1000 \$ \*\*\*\* Million \$ (G) : Gini Coefficient ---

### Agriculture In The Economy<sup>ly</sup>



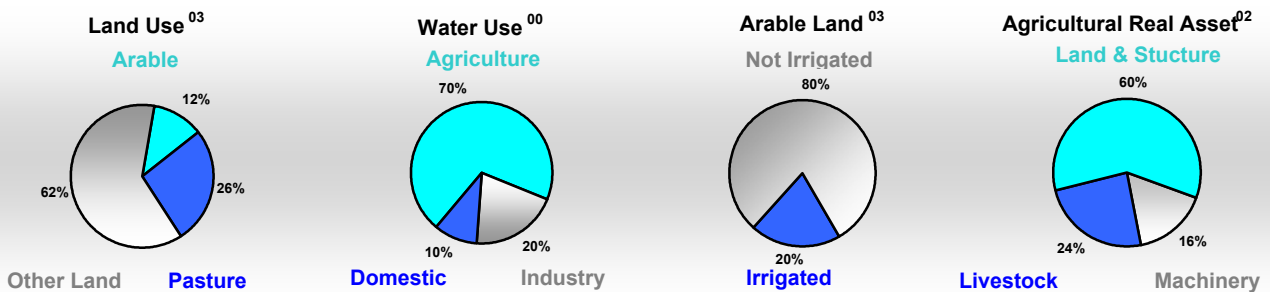
\* EAP: Economically Active Population

### Resources

Arable Land <sup>03 *</sup>	1,402,317
Permanent Crops <sup>03 *</sup>	138,255
Pasture <sup>03 *</sup>	3,432,834
Cattle & Buffaloes <sup>05 **</sup>	1,529,110
Sheep & Goats <sup>05 **</sup>	1,888,736
Tractors <sup>03 / '000 ha</sup>	20
Harvesters & Threshers <sup>03 / '000 ha</sup>	3
Fertilizers Production <sup>03 ***</sup>	155,057
Fertilizers Consumption <sup>03 ***</sup>	147,917
Rainfall Index (mm)	n.a.

\* 1000ha \*\* 1000 Heads \*\*\* 1000 Tonnes N,P2O5,K2O

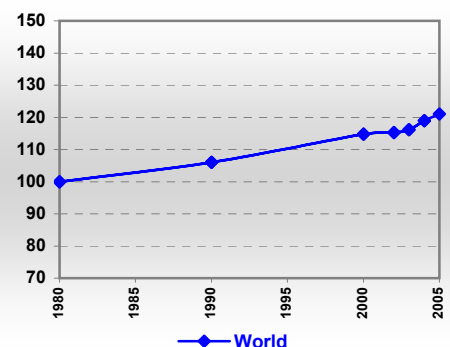
### Resources Distribution



### Production

Agriculture <sup>05 *</sup>		Forestry <sup>04</sup>		Fisheries <sup>04 *</sup>	
Cereals	2,227,980	Indust.Roundwood **	1,645,681	Pulpwd, Rnd & Split **	521,715
Meat	265,105	Paper, Paper Board *	354,489	Round Wood **	3,417,660
Fruits & Vegetables	1,392,253			Log:Saw & Veneer **	970,481
Roots & Tubers	711,682			Sawn Wood **	415,553
Pulses	61,706			Wood Charcoal *	43,694
Oilseeds & Nuts (oil eq.)	146,353			Wood Fuel **	1,771,978
Sugar Crops	1,533,272			Wood Pulp *	174,635
Tobacco	6,565			Wood-based Panels **	211,128
Fibre Crops	28,782				
				Pelagic	40,664
				Freshwater	36,147
				Demersal	22,324
				Molluscs	16,786

### Per Capita Agricultural Production Index



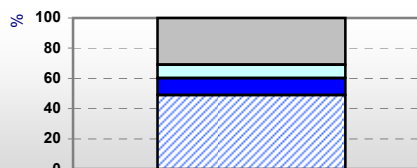
\* 1000Tonnes \*\* 1000m<sup>3</sup>

Time reference= <sup>99-01</sup>:1999-2001, <sup>00</sup>:2000, <sup>02</sup>:2002, <sup>01-03</sup>:2001-2003, <sup>03</sup>:2003, <sup>04</sup>:2004, <sup>ly</sup>:Latest Available Year

# World

## Trade

Agricultural Exports <sup>*04</sup>	604,329
% 4 Major Exports in Agr.Exp. <sup>04</sup>	13
% Agr. Exports in Tot.Exports <sup>04</sup>	7



**Composition of Agricultural Trade %**

- Non Food Products
- Cereals
- Livestock Products
- All Other Food

Fishery Exports <sup>*04</sup>	71,507
Forestry Exports <sup>*04</sup>	178,933

### Trade Partners & Products

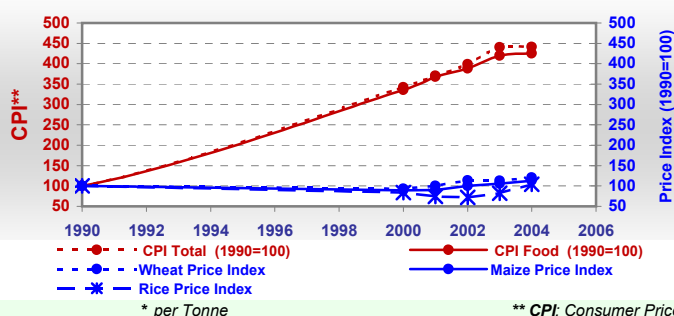
<b>Major Importers (Agric.)</b>	USA	Germany	Japan
<b>Major Exporters (Agric.)</b>	USA	Netherlands	France
<b>Major Traded Commodities</b>	Wine	Wheat	Soybeans

\* Million \$

## Prices

Average Producer Prices <sup>01-03</sup>	\$*	\$Green *
Wheat	145	149
Rice	188	187
Maize	117	121
Soybean	214	264
Coffee	639	831
Tobacco	1,237	1,594
Cow Milk	269	265
Cattle (Live Weight)	1,183	1,217
Pig (Live Weight)	957	1,015
Chicken (Live Weight)	972	894

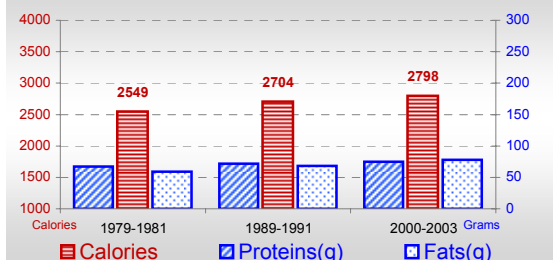
### Consumer and Agricultural Trade Price Indices



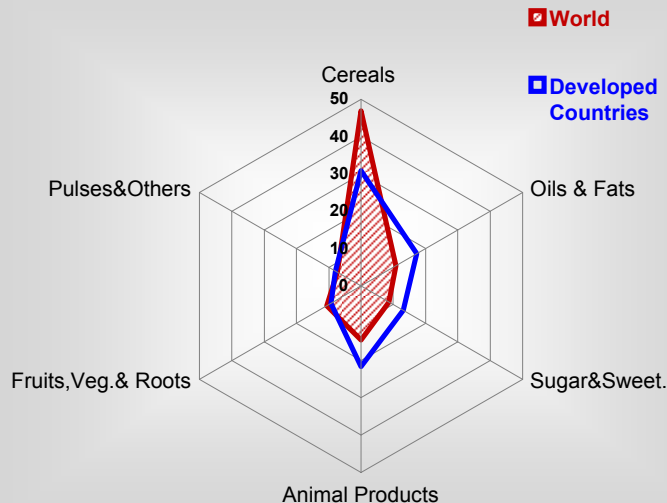
\* per Tonne \*\* CPI: Consumer Price Index

## Consumption

### Per Capita Daily Consumption



### Source of Dietary Energy Consumption % <sup>01-03</sup>



### Per Capita Daily Calorie Intake From Selected Food Items <sup>01-03</sup>

Rice	557.00
Wheat	521.00
Maize	147.00
Sorghum	33
Potatoes	60
Cassava	42.00
Sugar	202.00
Soybean Oil	87.00
Palm Oil	50.00
Milk	122.00
Anim.Fats(Raw&Butter)	62.00
Eggs	33.00
Pig Meat	117.00
Poultry Meat	46.00
Bovine Meat	40
Sheep & Goats Meat	11

### Food Balance <sup>01-03 (1000Tonnes)</sup>

Food Groups	Production (+)	Exports (-)	Imports (+)	Seed, Feed, Others Uses (-)	Consumption (=)
Cereals	1,879,601	294,688	294,068	936,253	942,728
Veg.oils	101,722	47,966	45,904	29,983	69,677
Sugar&Sw.	177,427	51,807	48,520	16,312	157,828
Roots&Tub.	690,714	36,382	41,697	296,581	399,448
Meat	246,462	27,583	26,277	2,015	243,141
Milk	601,879	78,658	74,421	102,869	494,772

Time reference= <sup>99-01</sup>:1999-2001, <sup>00</sup>:2000, <sup>02</sup>:2002, <sup>01-03</sup>:2001-2003, <sup>03</sup>:2003, <sup>04</sup>:2004, <sup>ly</sup>:Latest Available Year